



APPALACHIAN
APPALACHIAN FLOORING

Grade Specifications for Appalachian Flooring Products

Content

- 3.** What is a grade?
- 4.** Hickory Excel - Solid
- 5.** Hickory Excel - Engineered
- 6.** Maple Prestige - Solid
- 7.** Maple Prestige - Engineered
- 8.** Maple Excel - Solid
- 9.** Maple Excel - Engineered
- 10.** Maple Live Sawn - Engineered
- 11.** Red Oak Prestige - Solid
- 12.** Red Oak Prestige - Engineered
- 13.** Red Oak Excel - Solid
- 14.** Red Oak Excel - Engineered
- 15.** White Oak Prestige - Solid
- 16.** White Oak Advantage - Solid
- 17.** White Oak Excel - Engineered
- 18.** White Oak Live Sawn - Engineered
- 19.** Birch Excel - Solid

What is a grade?

The grade of a wood floor represents its appearance. Since each plank is unique, we have classified them according to their variations in colour, the presence of knots, splits and other character marks that are naturally present in the wood flooring.

The choice of grade is, in fact, a matter of appearance.

Purpose of this document

With this document, we aim to clarify what variations are acceptable in the Appalachian Flooring grading system. Each species of hardwood has a different appearance, with possible differences even between solid and engineered flooring.

Disclaimer: Each image is of a Natural colour floor. However colours may vary in person and these pictures should be used for grading references only.



Hickory Excel

Solid



Character marks



Colour variation



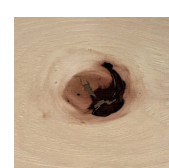
Micro cracks



Mineral streaks



Pin knots



Small filled knots



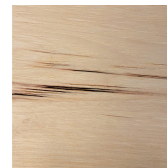
Hickory Excel Engineered



Colour variation



Micro cracks



Mineral streaks



Pin knots



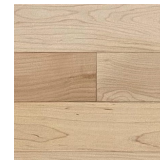
Small filled knots



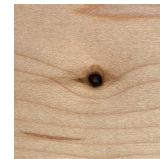
Maple Prestige Solid



Mineral streaks



Nuanced coloration



Pin knots



Maple Prestige Engineered



Mineral streaks



Nuanced coloration



Pin knots



Maple Excel Solid



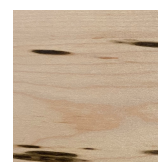
Character marks



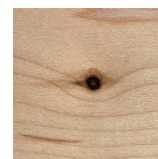
Colour variation



Micro cracks



Mineral streaks



Pin knots



Small filled knots

Maple Excel Engineered



Colour variation



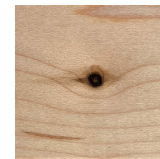
Micro cracks



Mineral streaks



Pin knots



Small filled knots



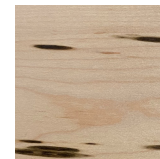
Maple Live Sawn Engineered



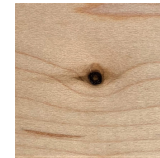
Character marks



Filled and
open knots



Mineral streaks



Pin knots



Pronounced
coloration



Splits

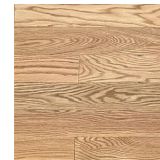


Red Oak Prestige

Solid



Mineral streaks



Nuanced coloration

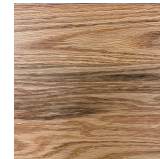


Pin knots

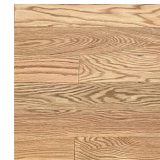


Red Oak Prestige

Engineered



Mineral streaks



Nuanced coloration



Pin knots



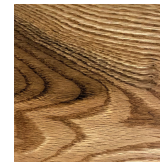
Red Oak

Excel

Solid



Character marks



Colour variation



Micro cracks



Mineral streaks



Pin knots



Small filled knots

Red Oak Excel Engineered



Colour variation



Micro cracks



Mineral streaks



Pin knots

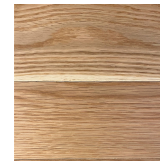


White Oak Prestige

Solid



Mineral streaks



Nuanced coloration



Pin knots



White Oak Advantage

Solid



Character marks



Colour variation



Micro cracks



Mineral streaks



Pin knots



Small filled knots

White Oak Excel

Engineered



Character marks



Colour variation



Mineral streaks



Pin knots



Small filled knots



Splits



White Oak Live Sawn Engineered



Character marks



Colour variation



Filled and
open knots



Micro cracks



Pin knots



Splits



Birch Excel

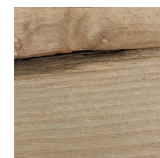
Solid



Character marks



Colour variation



Mineral streaks



Pin knots



Small filled knots

For additional details and information about Appalachian Flooring's grading system, please refer to your authorized Appalachian retailer or sales representative.



Version 1.0, January 2022